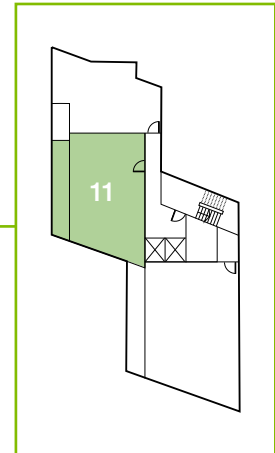


## Two bedroom apartment

Coneybear Point: **Apartment 11** - fourth floor

Total sq m: 74m<sup>2</sup>

Kitchen / dining / living	5.6 x 6.3m
Bedroom 1	3.2 x 3.9m
Bedroom 2	3.1 x 4.2m



Floorplans shown are indicative only. All room sizes are approximate with maximum dimensions of finished measurements\*. Measurements have been taken into the kitchen units and are not intended for carpet sizes or items of furniture. Room layouts may be subject to minor modifications. Furniture, kitchen and bathroom layouts shown are indicative only. \*Measurement at widest point.

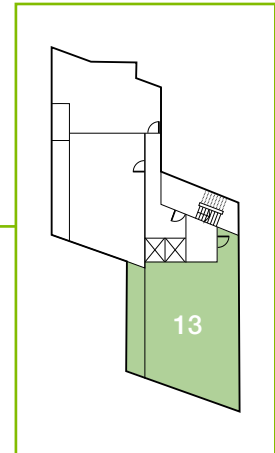
Moat supports the development of mixed tenure communities and is proud to provide homes for social rent and shared ownership at Greenwich Millennium Village. We may change the tenure of some properties subject to demand.

Moat Homes Limited is a charitable housing association.

## Two bedroom apartment (wheelchair accessible)

Coneybear Point: **Apartment 13** - fifth floor

Total sq m: 104m<sup>2</sup>



Kitchen / dining / living	8.3 x 8.2m
Bedroom 1	3.6 x 4.1m
Bedroom 2	4.8 x 3.0m



Floorplans shown are indicative only. All room sizes are approximate with maximum dimensions of finished measurements\*. Measurements have been taken into the kitchen units and are not intended for carpet sizes or items of furniture. Room layouts may be subject to minor modifications. Furniture, kitchen and bathroom layouts shown are indicative only. \*Measurement at widest point.

Moat supports the development of mixed tenure communities and is proud to provide homes for social rent and shared ownership at Greenwich Millennium Village. We may change the tenure of some properties subject to demand.

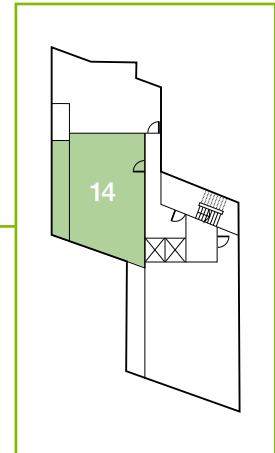
Moat Homes Limited is a charitable housing association.

## Two bedroom apartment

Coneybear Point: **Apartment 14** - Fifth Floor

Total sq m: 74m<sup>2</sup>

Kitchen / dining / living	5.6 x 6.3m
Bedroom 1	3.2 x 3.9m
Bedroom 2	3.1 x 4.1m



Floorplans shown are indicative only. All room sizes are approximate with maximum dimensions of finished measurements\*. Measurements have been taken into the kitchen units and are not intended for carpet sizes or items of furniture. Room layouts may be subject to minor modifications. Furniture, kitchen and bathroom layouts shown are indicative only. \*Measurement at widest point.

Moat supports the development of mixed tenure communities and is proud to provide homes for social rent and shared ownership at Greenwich Millennium Village. We may change the tenure of some properties subject to demand.

Moat Homes Limited is a charitable housing association.

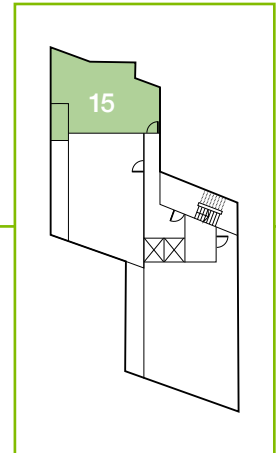
## One bedroom apartment

Coneybear Point: **Apartment 15** - Fifth Floor

Total sq m: 56m<sup>2</sup>

Kitchen / dining / living 4.6 x 7.1m

Bedroom 4.3 x 2.7m



Floorplans shown are indicative only. All room sizes are approximate with maximum dimensions of finished measurements\*. Measurements have been taken into the kitchen units and are not intended for carpet sizes or items of furniture. Room layouts may be subject to minor modifications. Furniture, kitchen and bathroom layouts shown are indicative only. \*Measurement at widest point.

Moat supports the development of mixed tenure communities and is proud to provide homes for social rent and shared ownership at Greenwich Millennium Village. We may change the tenure of some properties subject to demand.

Moat Homes Limited is a charitable housing association.